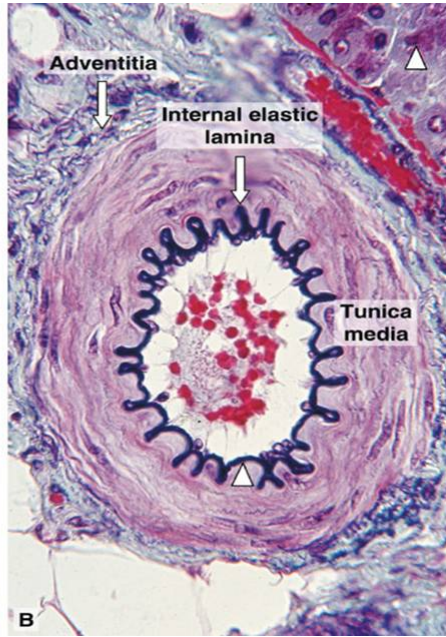
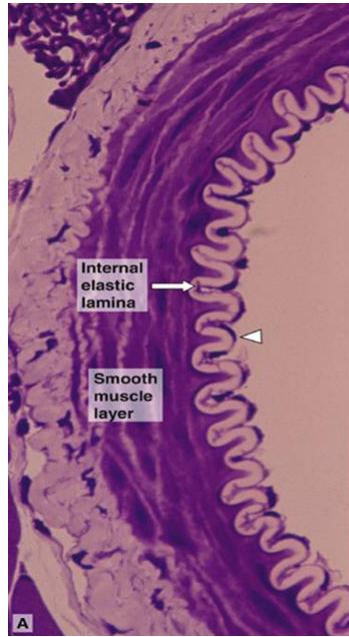
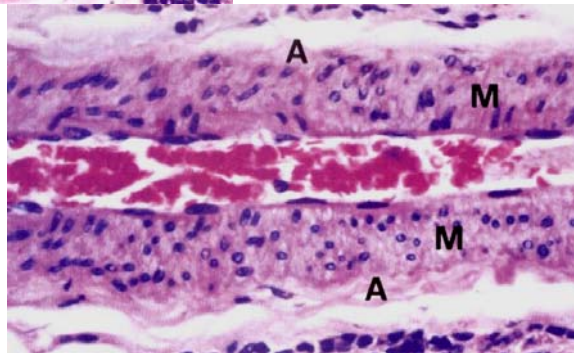


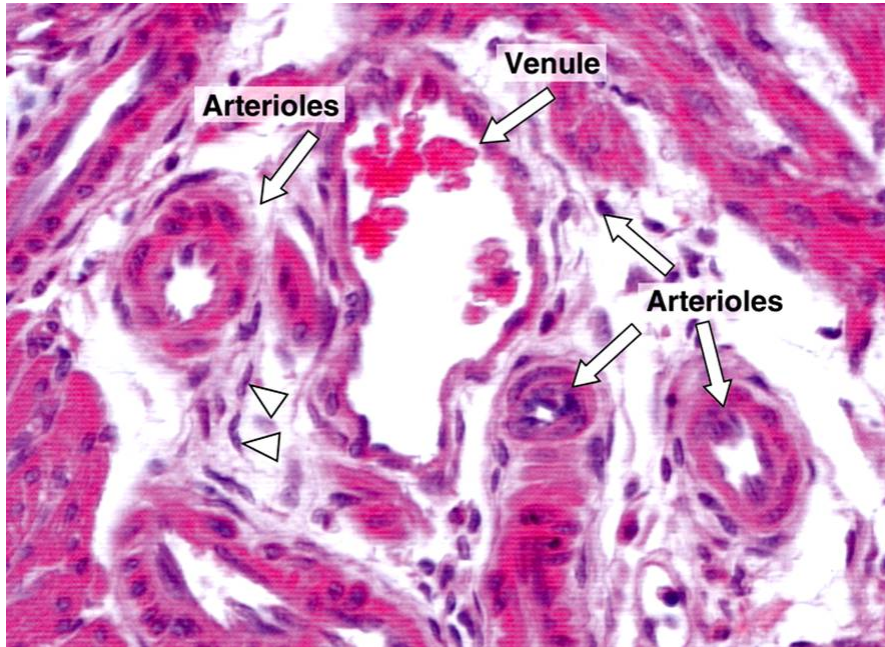
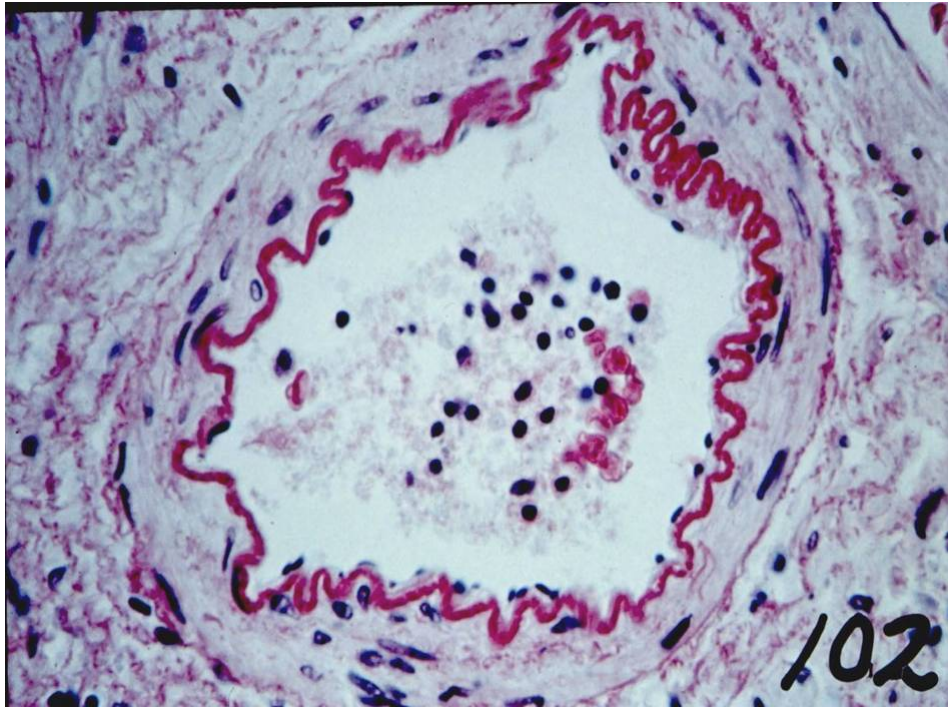
**Figure 11-3** Light micrograph of a muscular artery ( $\times 132$ ). Note the internal and external elastic laminae and the thick tunica media.  
Copyright © 2002 by W.B. Saunders Company. All rights reserved.



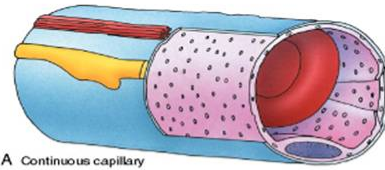
**Small Arteries**

Basic Histology, Junqueira and Carneiro, 2003

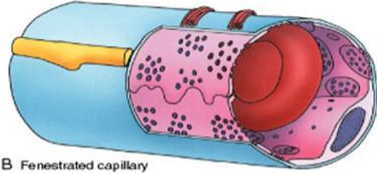




Basic Histology, Junqueira and Carneiro, 2003



A Continuous capillary



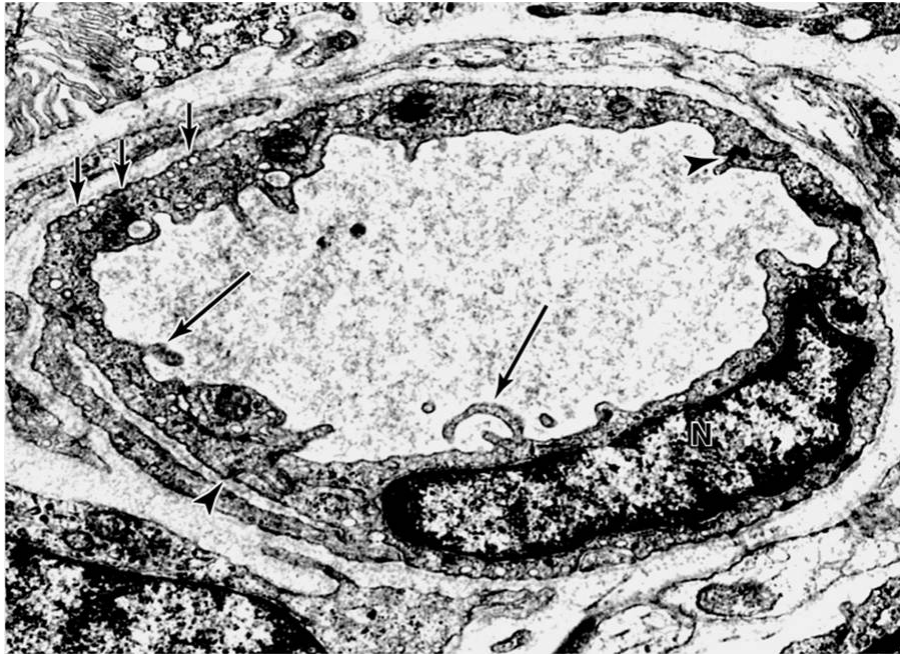
B Fenestrated capillary



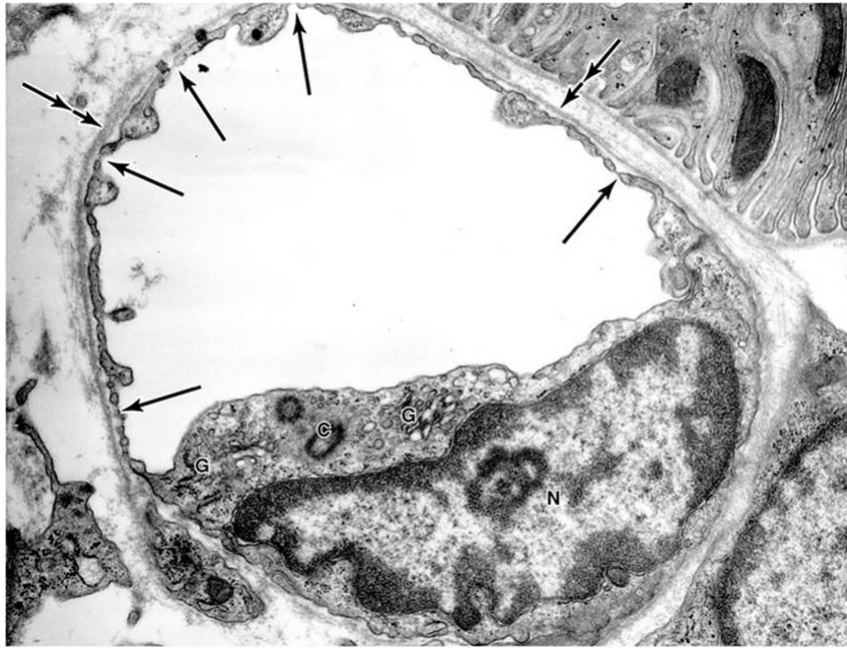
C Sinusoidal (discontinuous) capillary

Figure 11–12 Diagram of the three types of capillaries. A, Continuous. B, Fenestrated. C, Sinusoidal.

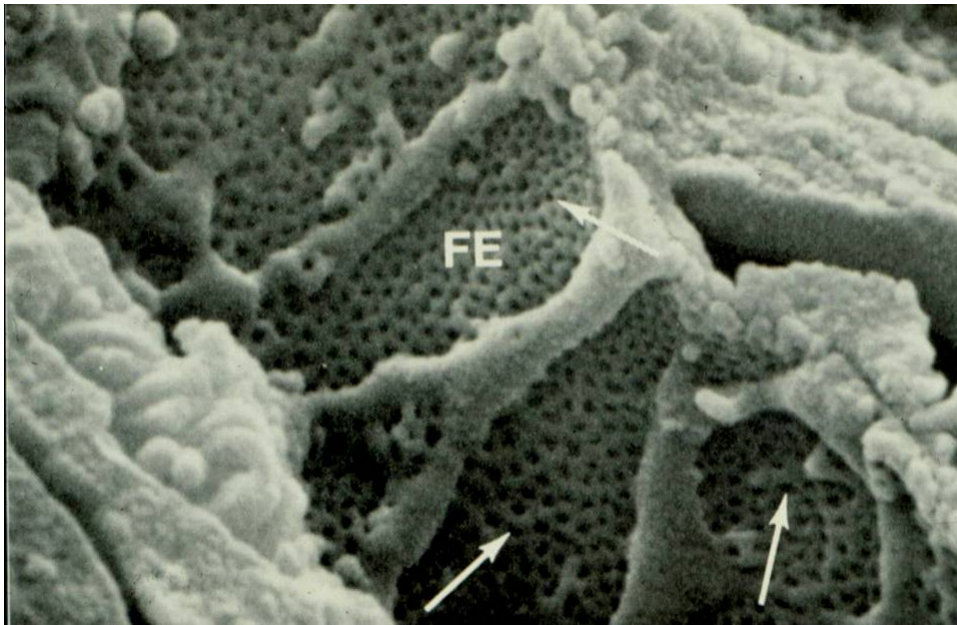
Copyright © 2002 by W.B. Saunders Company. All rights reserved.

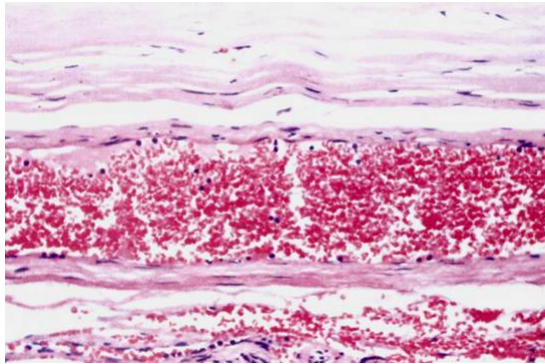


Basic Histology, Junqueira and Carneiro, 2003



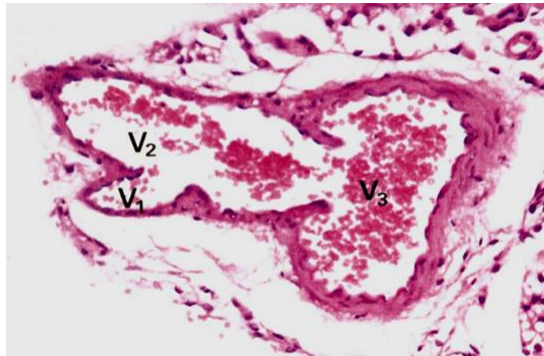
Basic Histology, Junqueira and Carneiro, 2003



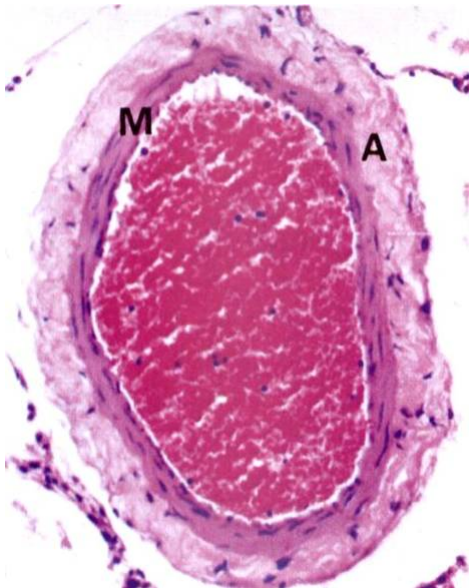


Muscular Venules and Small Veins

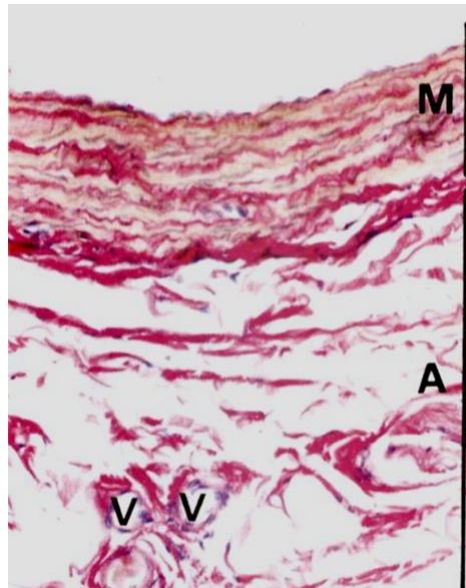
Wheater's Functional Histology, 2000



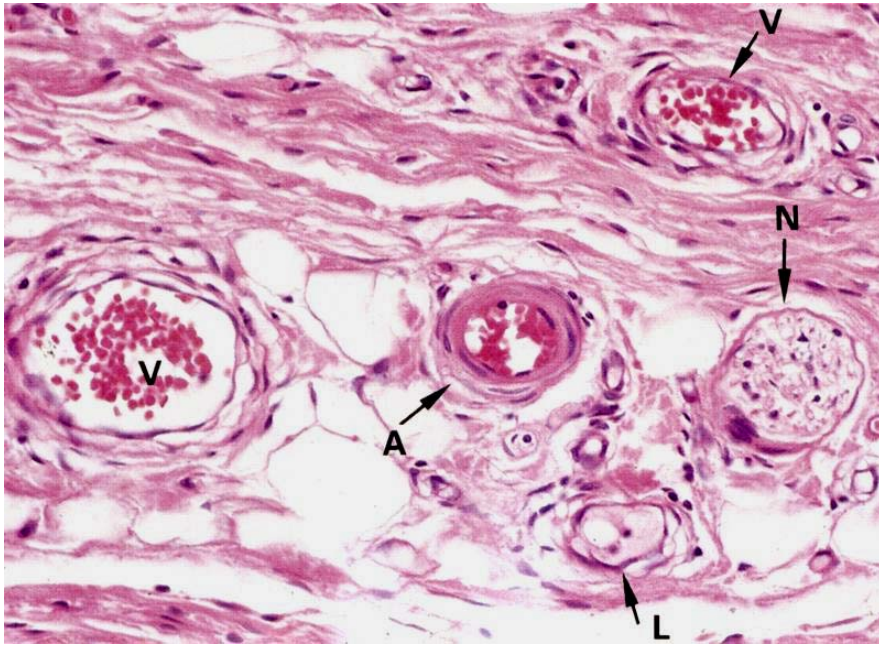
Medium Vein



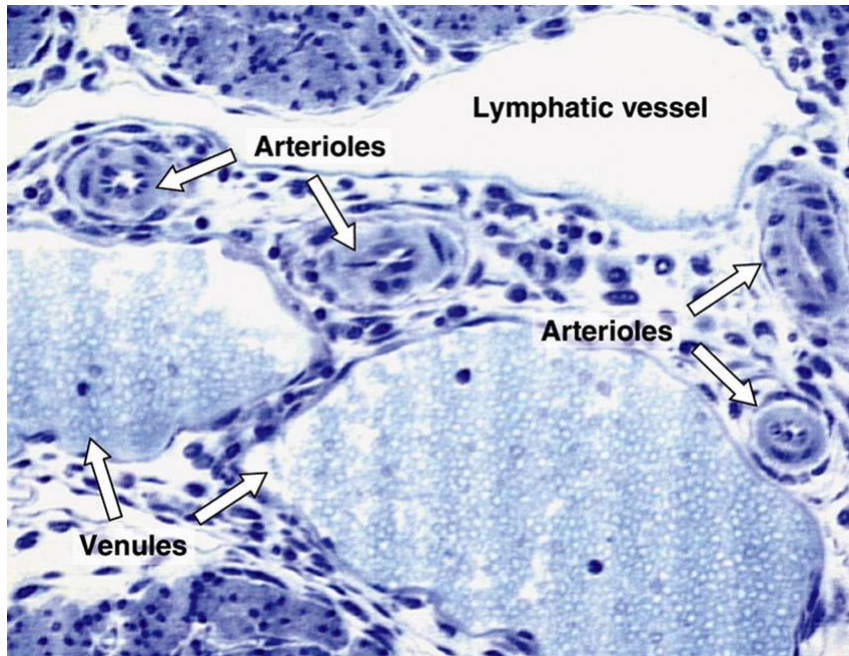
Large Vein



Wheater's Functional Histology, 2000



Wheater's Functional Histology, 2000



Basic Histology, Junqueira and Carneiro, 2003